



# Medi-2200



*Medical Imaging Systems*



**Digitizer  
for all  
Dental films**

## Smart and Easy with Full Functions

*The Medi-2200 is a professional dental digitizer with full functions. It can easily transfer all kinds of dental films into digital format for easier management in a long term of time. Three Smart-Scan buttons provide a quick and easy way to start the scanning process, not requiring any efforts to go through the software interface. Also, using the templates together with the Auto-crop function offered by the specially designed software, the Medi-2200 can quickly perform scanning, cropping, and saving images for multi-films at a time.*

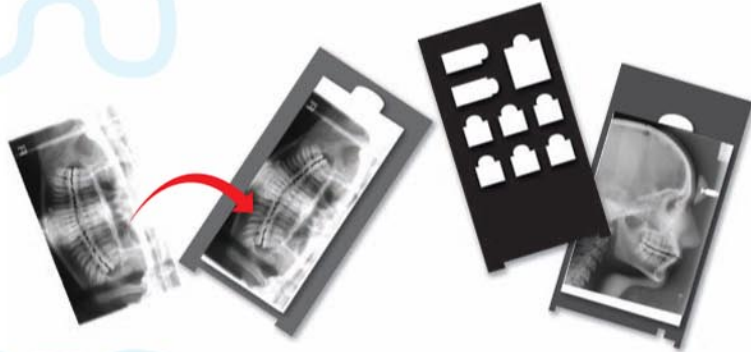
*Equipped with 16-bit grayscale, 4.0 Dmax, and an optical resolution up to 1200 dpi, the Medi-2200 ensures that your scans will capture all the details presenting in light and darkness areas, offering the clinically proven image quality to the medical professionals. In addition, through the help of an optional DICOM gateway software, the digitized dental films by the Medi-2200 can be easily and quickly integrated with the HIS/PACS system, allowing dentists and patients to check the therapy conditions simultaneously.*

## Advantages

- Presses Smart-Scan buttons to scan three sizes of templates and to launch the digitizing process quickly and easily.
- Customized templates cover all kinds of dental films, including intraoral, panoramic, and cephalometric.
- Uses templates to perform the Auto-crop function, easily separating and saving multi-films into an individual readable file.
- Offers up to 1200 dpi optical resolution for catching better image details.
- Compatible with the medical integrated system.
- Supports the TWAIN interface.

## Smart-Scan function saves time and efforts

Smart-Scan function lets you easily scan, crop and save scanned images of multi films into individual file, simply by using the templates and the Auto-crop function together.



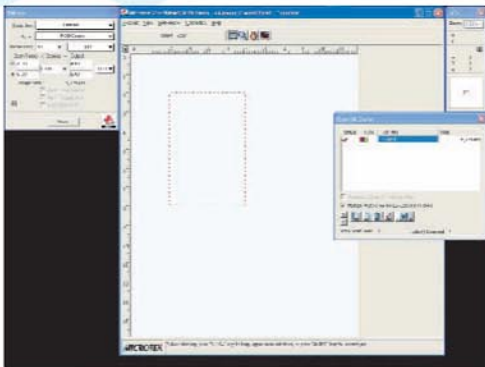
Templates



Auto-Crop

## Easily using interface of the ScanWizard Medi Smart

Simply click a button on the interface of the ScanWizard Medi Smart, the Medi-2200 can easily perform the digitizing job in seconds.



## Three Smart-Scan buttons to launch the digitizing function quickly and easily

With three Smart-Scan buttons, the Medi-2200 provides a quick and easy way to launch frequently used functions for dental films digitizing.

## Specifications

<b>Three templates</b>	Size 0, 1, 2, 3, 4, Panoramic and Cephalometric films
<b>Scanning area</b>	8.0" x 12"
<b>Scanning mode</b>	8-bit, 16-bit grayscale
<b>Optical resolution</b>	1200 dpi
<b>Dmax</b>	4.0
<b>Interface</b>	Hi-Speed USB (USB 2.0)
<b>Dimensions (L x W x H)</b>	576 x 297 x 118 mm
<b>Weight</b>	6.4 kg
<b>Power supply</b>	100 to 240 VAC~, 47 to 63 Hz
<b>Max power consumption</b>	45 Watts
<b>System requirements</b>	<ul style="list-style-type: none"> <li>• CD-ROM drive (for installing software)</li> <li>• 512 MB RAM or more</li> <li>• Pentium IV or higher</li> <li>• With Hi-Speed USB (USB 2.0) port</li> <li>• Microsoft Windows 2000, XP, or Vista</li> </ul>
<b>Certifications</b>	CE, FCC, RoHS

© 2009 Microtek. Microtek, ScanMaker, ArtixScan, and ScanWizard are trademarks or registered trademarks of Microtek International, Inc. All other brands, product names and logos herein are trademarks or registered trademarks of their respective holders. Specifications, software bundles and accessories are subject to change without notice. Delivery of technical support services subject to change without notice. Not responsible for typographical errors. Digital Imagery © 2009 Jupiterimages Co. 051209



**MICROTEK**  
www.microtek.com